

ClimateSmartAdvisors

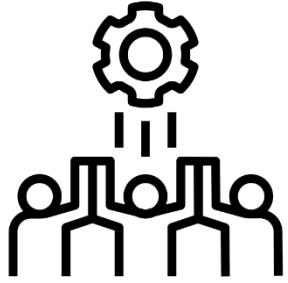
Demonstration network on climate smart farming –
boosting the role of advisory services

(starting date April 1st 2023)

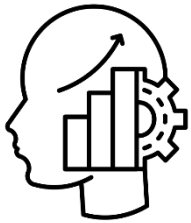
Lies Debruyne
EUFRRAS meeting, Sept 8th 2022

ILVO

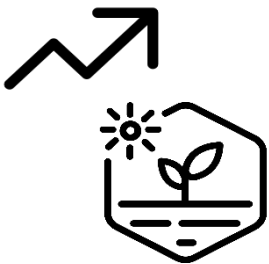
Overall objective



Mobilise the EU advisory community

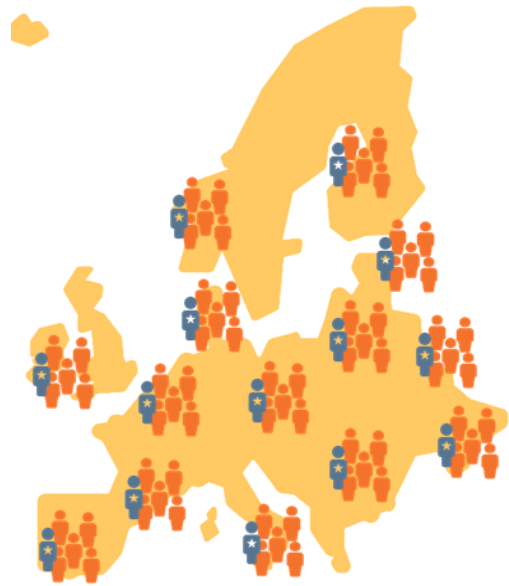


Strengthen capacity for providing targeted advice

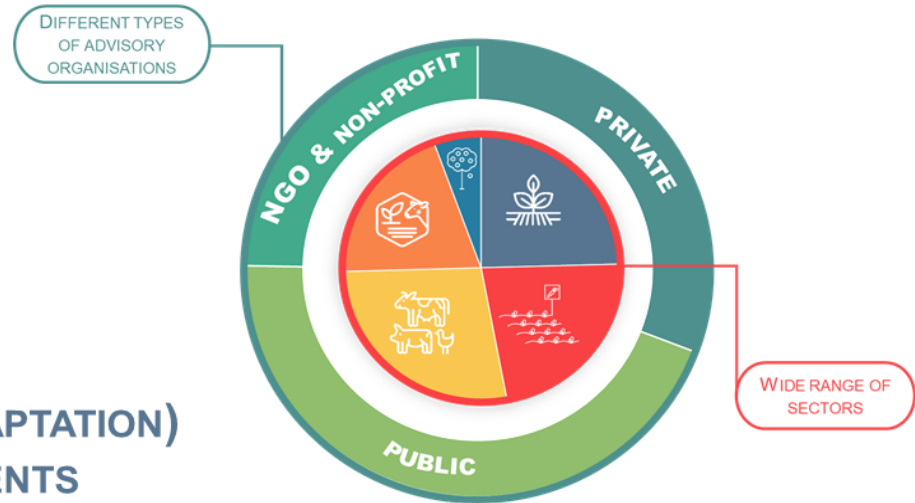


Broader uptake of CSF practices, and approaches and solutions, developed in CFD

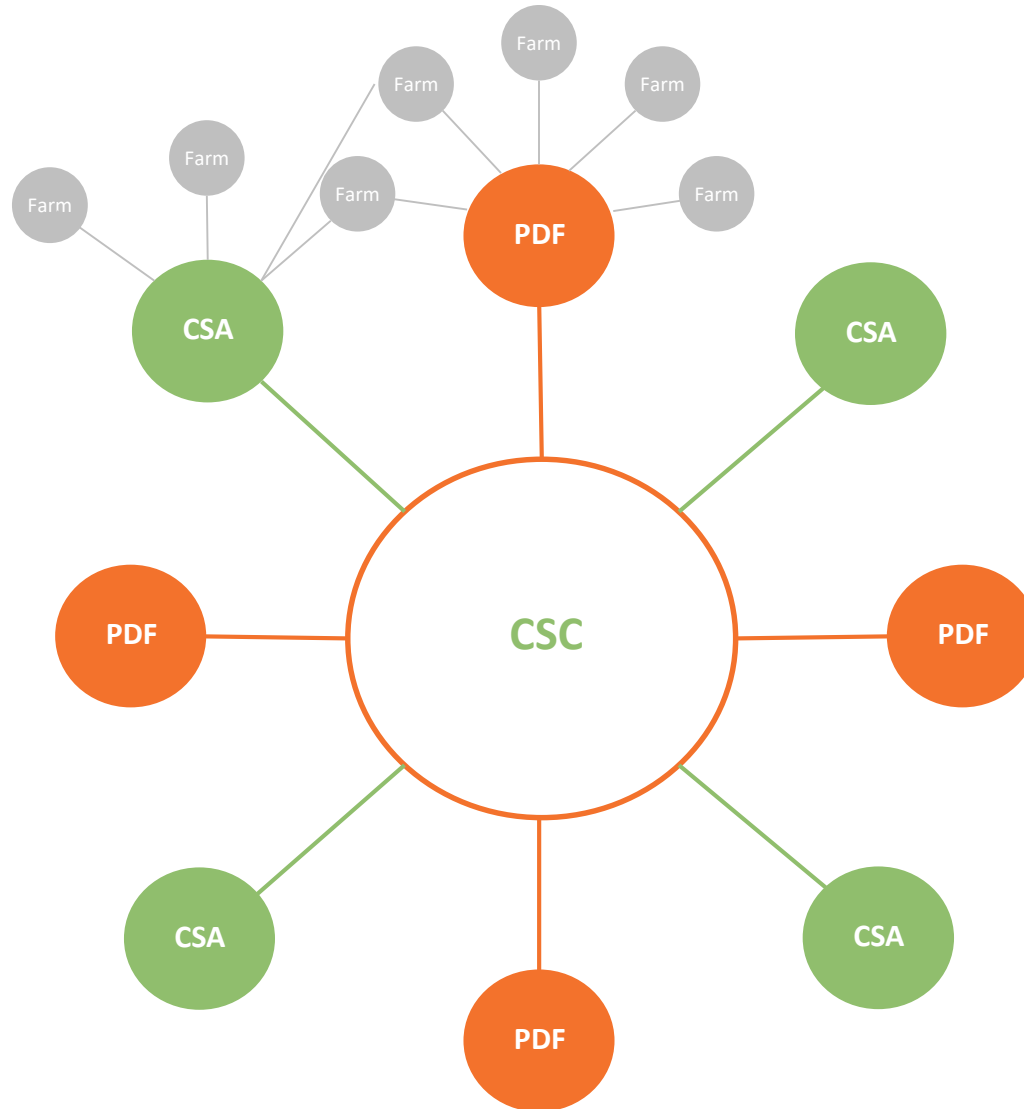
ClimateSmartAdvisors in numbers



- 73** PARTNER ORGANISATIONS
- 57** ADVISORY SERVICE PROVIDERS
- 260** COMMUNITIES OF PRACTICE
- 140** CLIMATE SMART COACHES
- 1360** CLIMATE SMART ADVISORS
- 27** NATIONAL CS-AKIS NETWORKS
- 12** THEMATIC AREAS (MITIGATION & ADAPTATION)
- 8-10** CO-DESIGN INNOVATION EXPERIMENTS

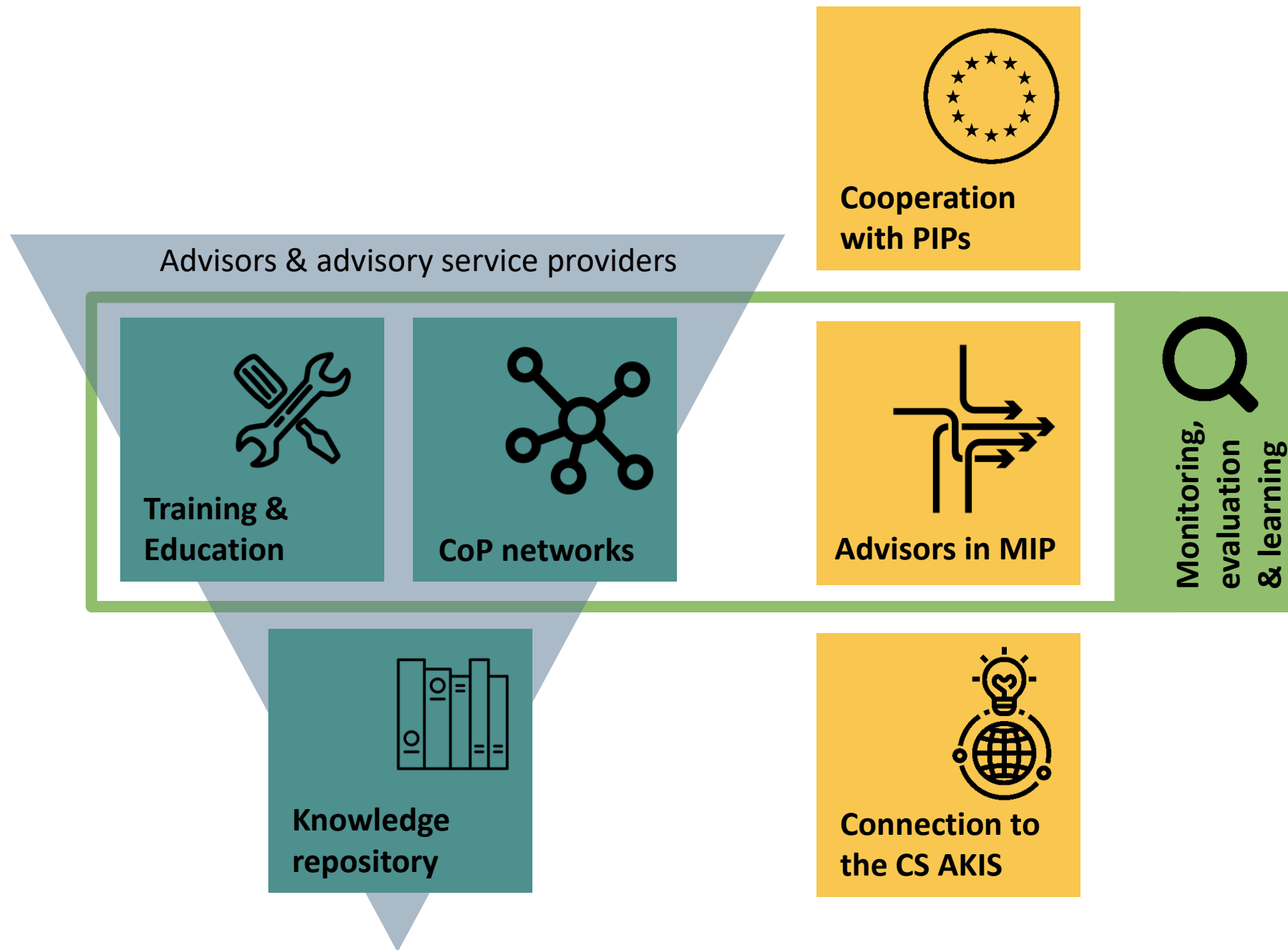


ClimateSmartAdvisors Network



ClimateFarmDemo:
Pilot Farm Networks

ClimateSmartAdvisors:
Communities of Practice



Thank you!

lies.debruyne@ilvo.vlaanderen.be

Research Institute for
Agriculture, Fisheries and Food
Burg. Van Gansberghelaan 115 box 2
9820 Merelbeke – Belgium
T + 32 (0)9 272 23 40

l&m@ilvo.vlaanderen.be
www.ilvo.vlaanderen.be